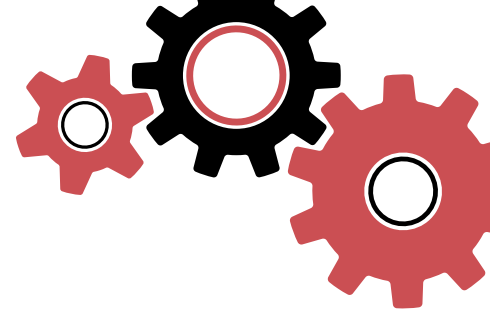


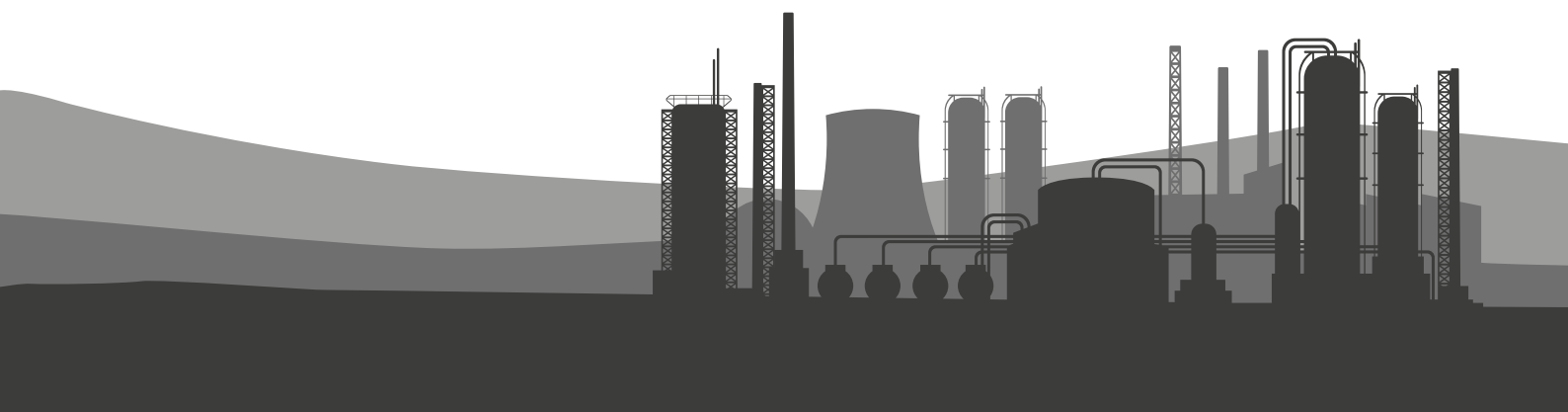


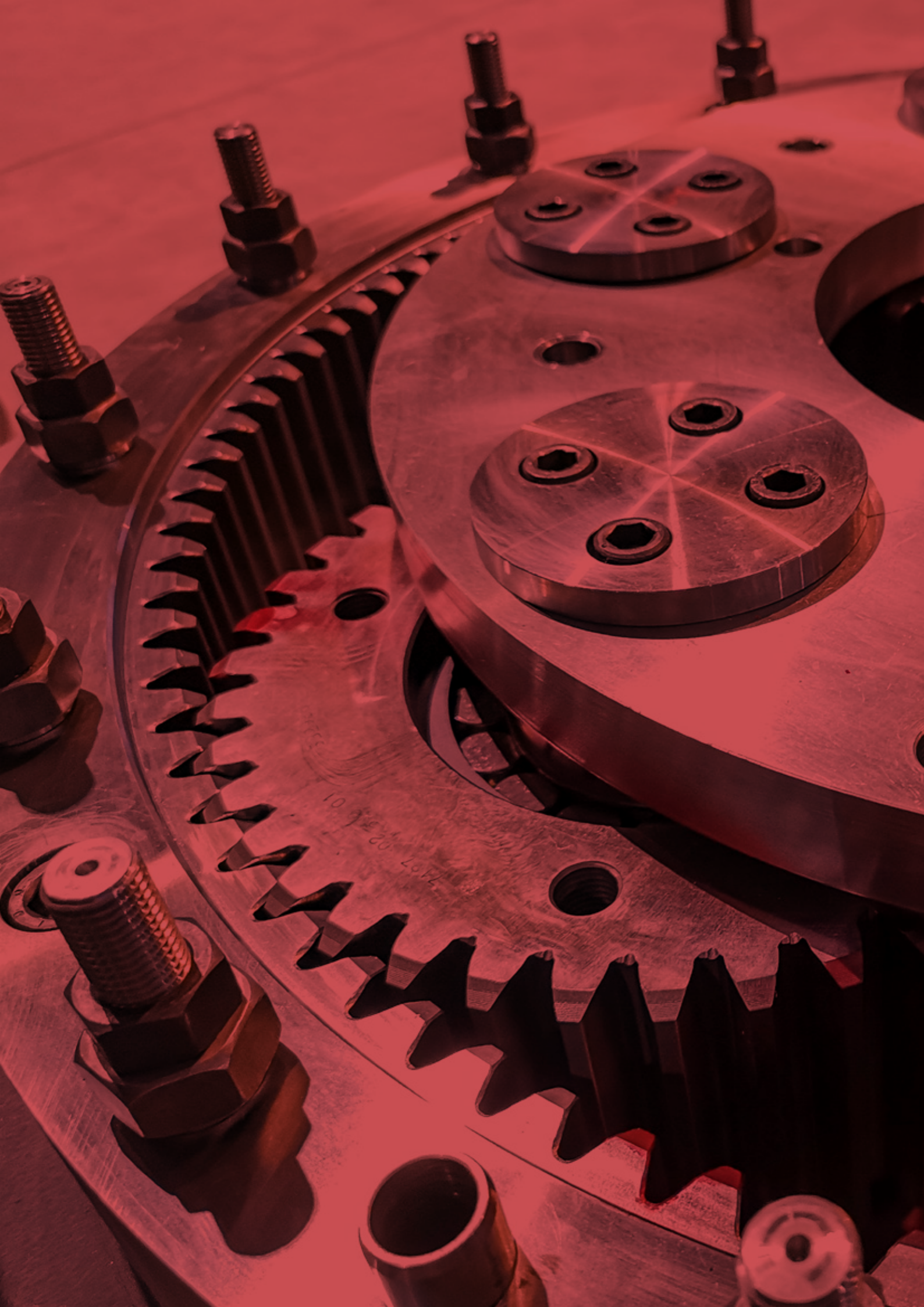
**KISSLING**  
revolution with gears



# Branch Solutions

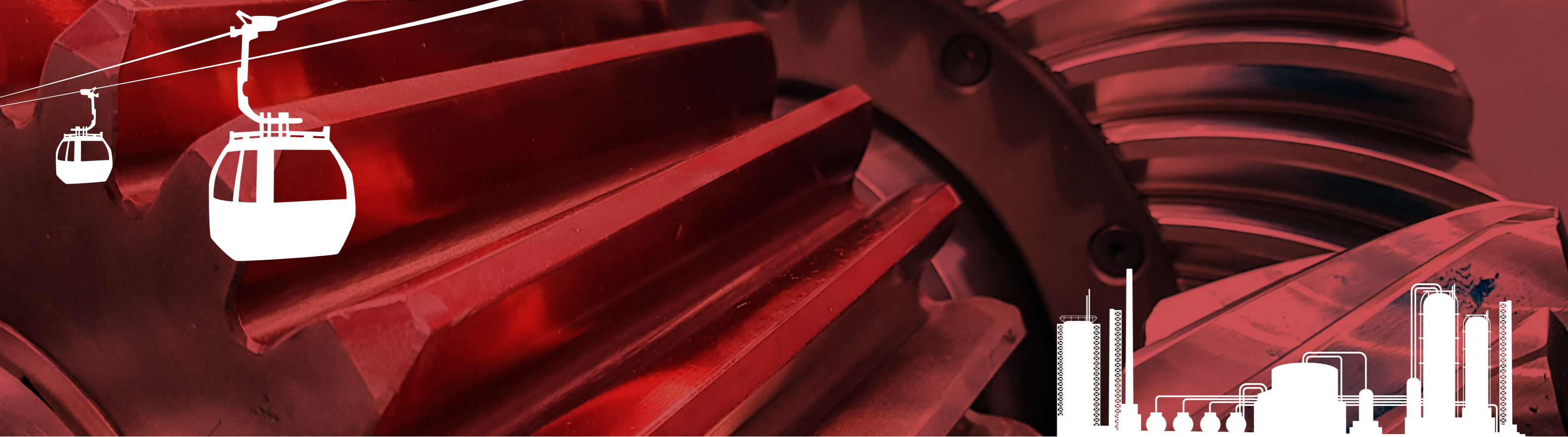
Kissling AG – Innovation since 1925





**KISSLING**  
revolution with gears

Kissling AG has been developing, designing and producing gear units for a wide range of applications since 1925. All products are characterized by the high quality of materials and manufacturing, which can be expected from a Swiss company.



# A solution for every industry

**Specific space requirements, operational safety, special conditions? Kissling AG develops, designs and manufactures all types of gears for the highest demands and for every area of application.**

When special requests, small series or even custom-made products are required, then individual problem solutions are actually required that only a medium-sized company with experienced flexibility and manageable size can offer. Kissling AG has been proving its efficiency for decades and is one of the leading companies in this field. Renowned

machine and plant manufacturers from all over the world and from all industries make use of the high engineering performance of Kissling AG and put their trust in the excellent manufacturing quality that can only be achieved by a Swiss manufacturer and engineering company.

The range of services includes development, Design and manufacturing of special gears:

- **Helical and bevel-helical gearboxes**
- **Planetary gearboxes**
- **Power splitting gearboxes**
- **High-speed gearboxes**
- **Double and multi-shaft gearboxes**

# Family-owned company Kissling AG

**Kissling AG which is a family-owned company today, maintained its traditional values. Technological leadership, production specific and reliable quality, combined with a special focus on the individual needs of our customers.**

In economically turbulent times, it's good to be able to know that you have a strong partner at your side. A leading supplier of high quality gearbox and drive solutions.

The name Kissling stands for quality and customized solutions. We have received many interesting orders since 1925. Kissling customers can be found all over the world. Their production systems are sold worldwide and can be found in various industries. The gear units supplied by Kissling not only move cable cars, gondolas, cement mills, extrusion machines and other industrial applications, they are also used on gas and steam turbines, compressors and generators.

## Passenger transportation

This industry belongs to the ones that have always influenced Kissling. In this sector, where high and uncompromising demands are made on the safety and reliability of the units, Kissling AG has establis-

hed itself as the market leader with a large number of gearbox series and over 50 years of experience in the industry.



## Amusement rides

Similar safety aspects have to be considered for drives for amusement rides in amusement parks. Special designs from Kissling AG are used for the world's fastest accelerating roller coaster with

speeds of up to 240 km/h. For the market leader for amusement rides, further drives for drop towers, winch and chain elevators were developed.



## Cement and sugar industry

The large, high-torque planetary gearboxes with output torques of up to 1,400 kNm are used particularly in mills in the cement, sugar and mineral industries. The highest requirements here are operational reliability and availability under very harsh conditions.

and bevel-helical gearboxes for a wide variety of conveyor systems. Well-known manufacturers were convinced by the reliability of Kissling products and have replaced the existing gearboxes with high-quality Kissling products. Careful design and clean execution of the assembly work guarantee the long-term durability of the Kissling gear units.

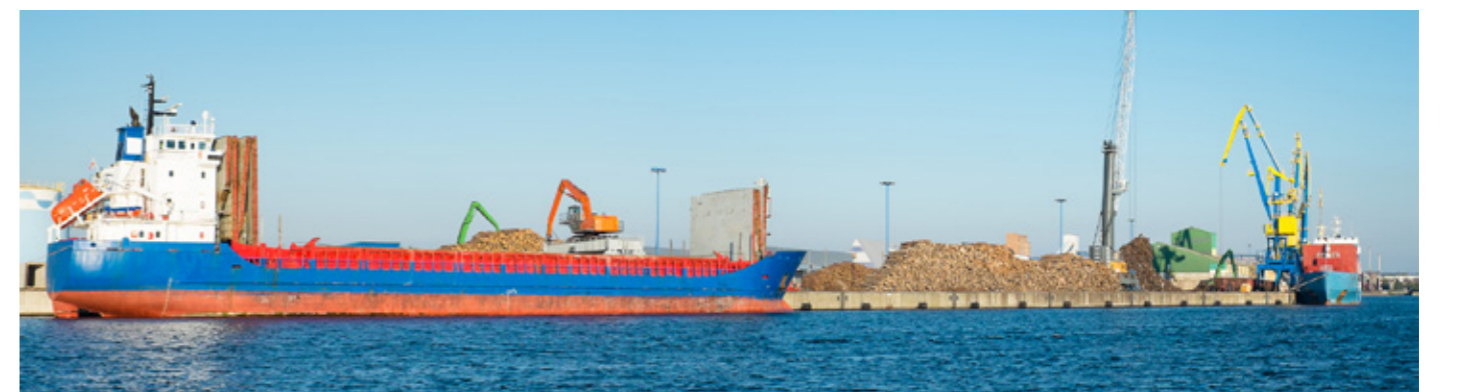
In addition to the drive units for the mills, Kissling AG supplies plug-in gearboxes as well as helical



## Bulk unloading

In this industry, Kissling AG offers a range of gearboxes, such as plug-in gearboxes and helical and bevel-helical gear units which comply with the current industrial standard. Special attention must be paid to the vessel unloaders. Equipped

with Kissling ER series turbo gearboxes, the special systems unload thousands of tons of bulk material out of the enormous interior of the vessel within a very short time.

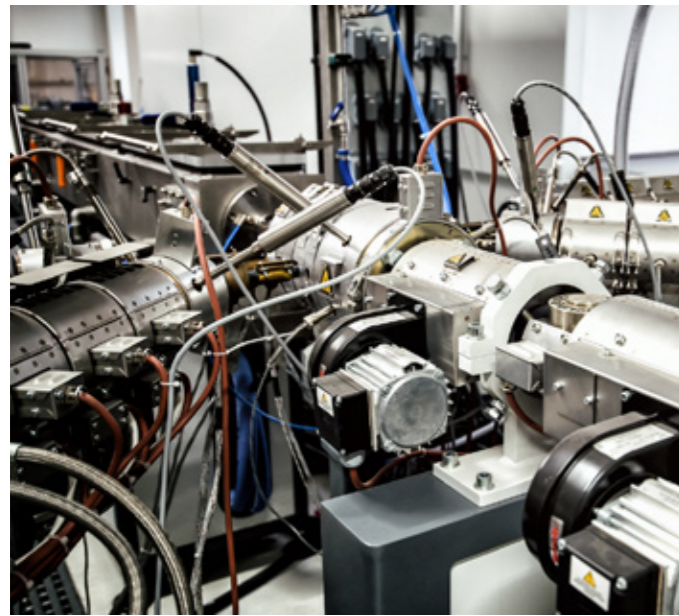


## Plastics and food extrusion

Kissling AG was involved in the development of the twin-head extruders for plastics and food extrusion right from its inception with its specially developed EX gearbox series.

In cooperation with leading plant manufacturers, compact gear units have been developed that

transmit high torques with relatively small diameter shafts and at the same time can absorb incredibly high axial forces thanks to the optimum arrangement of the tandem bearings. Kissling AG's portfolio also includes specially developed solutions for single-screw extruders and twin-screw extruders.



## Paper industry

In the large paper plants there are hundreds of gears built in. Basically all can be manufactured by Kissling AG. Today however, we concentrate on the key gearboxes, as the catalogue gearboxes can no longer keep up. The ER series turbo gearboxes

are used in particular for compressors for vacuum systems. For the vibration-sensitive smoothing rolls, the plant engineers prefer to rely on Kissling quality.



## Turbogears

Whether for generators, fans, turbines or pumps, Kissling AG has been developing, designing and producing speed reducers and increasers for this range of applications since 1970.

The gearbox is one of the core components of all these applications which make Kissling the heart of your system. With years of experience offering high quality, efficiency, flexibility and dependability, Kissling can meet and often exceed your gearing requirements.

All products are characterized by the high-quality of materials and manufacturing that can only be

expected from a Swiss engineering company. From the long standing tradition with high speed gears, Kissling continuously develops gearing technology, always embracing new trends and the demands from the market.

Kissling turbo gears can achieve efficiencies greater than 98% and are designed according to International Standards such as DIN 3990 / ISO 6336 / AGMA / API 613 and can also be ATEX certified for use in hazardous areas.



## Special and test rig gearboxes

A wide variety of gearboxes have been developed for test rigs in Formula 1, the aerospace and defence industries. Kissling AG knows no limits for these gearboxes: up to 80,000 rpm for jet starters, maximum acceleration for Formula 1 clutches or bevel gear sets at 22,000 rpm for helicopter test rigs. All

this has been realized in recent years. Kissling AG is also enthusiastic about special projects for other applications, and various hybrid and solar racing cars are equipped with Kissling gearboxes. Kissling works closely with the Swiss Federal Institute of Technology on these projects.





## Processes at Kissling AG

Independent of the size of the project at the Kissling AG the procedures for customer-specific development have all been standardized. If no detailed specifications are available, we will collect all data about the operation and environment together with the customer. Experienced project engineers deal with the tasks set, and through a short interaction between the customer, sales and the technical department, the customer is provided with an overview of his wishes which are presented as appropriate solutions to be considered. After agreeing on the technical design, the required quality, the delivery time and the investment amount, the technical department of Kissling AG sets out to achieve the agreed goals to the full satisfaction of the customer.



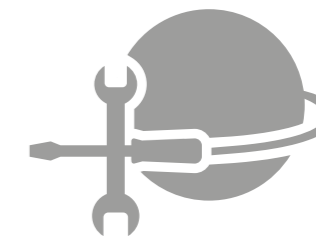
## Technical Competence

Customers for special gear units demand a high level of technical competence at all levels. At Kissling AG there are qualified engineers with multiple years of experience and knowledge. Not only for sales consulting and customer offers, but also for project management. From the first contact up to delivery and assembly a personal project engineer will be responsible for the order. He is fully informed about the progress of the project and able to provide competent information at any time.



## Quality at all levels

The Kissling AG is to be considered a pioneer in gearbox construction. Through permanent further development and incorporating the latest technologies in design, engineering and subcontracting, the company has its leading position in technology. For example, Kissling AG developed its own software to calculate gears, shafts and bearings. For Kissling AG, quality is not a buzzword, but the overall outcome. It means more functional reliability, longer service life and a better price performance ratios. It also means adherence to delivery dates and short delivery periods.



## Maintenance worldwide

Our own service center offers all after-sales services. Service assignments can be triggered worldwide within 24 hours 365 days a year. Our large warehouse reduces waiting times to an absolute minimum. If necessary at all. Because the quality of the Kissling gearboxes is reflected by the many years of daily use, wherein, other products already have failed.

Kissling AG customer service is always available for you, whether for our own gearboxes or also for other manufacturers. Well-trained specialists with many years of experience, are available to assist fast, efficient and with professional service all over the world.

The background of the page is filled with a pattern of interlocking gears of various sizes, rendered in a light gray line-art style. The gears are arranged in a way that they appear to be meshing together, creating a sense of motion and mechanical precision. The logo is positioned in the upper left corner, featuring the word 'KISS' in a bold, black, sans-serif font, followed by a series of red diagonal lines, and then 'LING' in a larger, bold, black, sans-serif font. Below this, the tagline 'revolution with gears' is written in a smaller, lowercase, sans-serif font.

**KISS** / **LING**  
revolution with gears

**Kissling AG**

Weieracherstrasse 3  
CH-8184 Bachenbülach  
Phone +41 44 308 97 97  
info@kissling.swiss  
www.kissling.swiss